



Motif ES / Motif-Rack ES S90 ES & PLG150-AN

Power User Plus Pack: "Number1"

Load Instructions

Contents of the zip file include the following items:

Motif ES Voice Editor file: "Number1.W7E" ("Number1.W8E")

Motif-Rack ES Voice Editor file: "Number1.W9E"

S90 ES Voice Editor file: "Number1.S7E"

AN Expert Editor file: Number1.ANS

PluginAllBulk file: Number1.w2b (direct load for Motif ES/S90 ES users without the AN Expert Editor)

Load Instructions (pdf) this document

EXPERT EDITOR (pdf) main document

The Motif ES, S90 ES and Motif-Rack ES have Studio Manager compliant editors. The AN Expert Editor can be launched from Studio Manager (although at this time it is not fully compliant). Launch Studio Manager version 2 and create a workspace and setup MIDI ports to match your system.



The aquamarine button indicates that this Editor is fully Studio Connections Recall compliant

Loading is in two steps: You must load both the PLG_USR Voices to the Motif ES/S90 ES or Motif-Rack ES (from that product's VOICE editor) and the AN Board Voice data to the PLG150-AN (via the AN Expert Editor).

Place your Motif ES/S90 ES or Motif-Rack ES in Voice mode and make sure it is set to communicate with your computer.

On the Motif ES/S90 ES

- Press [UTILITY]
- Press [F5] MIDI
- Press [SF5] OTHER

On the Motif-Rack ES

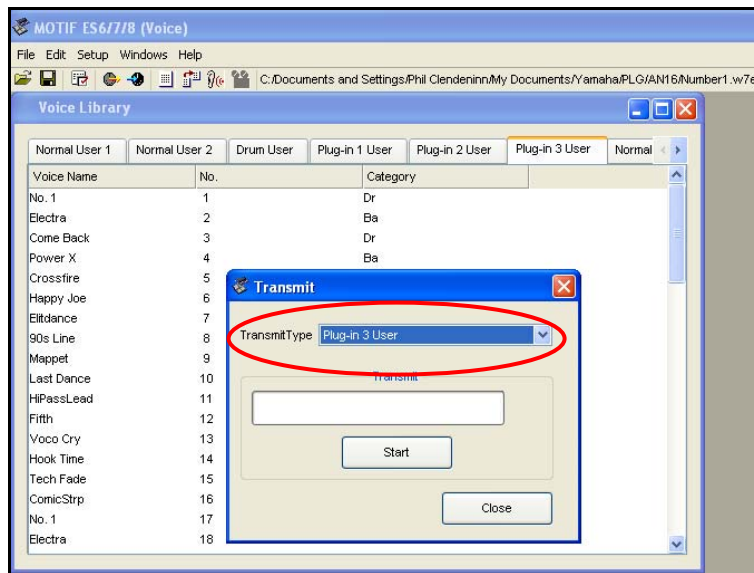
Press [UTILITY]
Use the [<]/[>] PAGE buttons to select the MIDI page
Cursor down to MIDI IN/OUT

Set MIDI IN/OUT = USB or MIDI depending on how you are communicating to the computer.

Launch the Voice Editor – Load the PLG_USR Voices

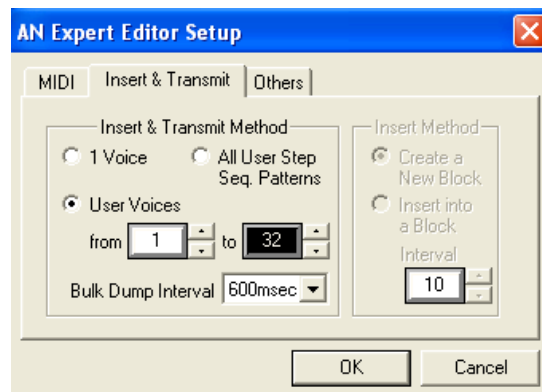
- Click on “Setup...” make sure the editor is set to communicate via the proper ports
- Click “Open” and open the file, “Number1.W7E” for the Motif ES, and “Number1.W9E” for the Motif-Rack ES.
- If you own an S90 ES open the “Number1.S7E”

You will need to click on the TRANSMIT icon on the toolbar **or** click on “Setup” and select “Transmit Voice Bulk...”. Select the Transmit Type for the PLUG-IN USER: 1, 2 **or** 3 according to the slot that contains your PLG150-AN. The same Voice data is loaded into each of the PLUG-IN USER positions... only transmit the **one bank** that corresponds to your PLG150-AN slot number. Shown below is the Motif ES Voice Editor set to transmit to a PLG150-AN in slot 3



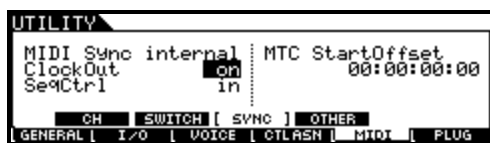
Launch the AN Expert Editor – Load the 32 PLG150-AN Board Voices (36/02)

- Click on “Setup...” make sure the editor is set to communicate via the proper ports for your system.
- Click on the “Insert & Transmit” tab (shown below). Here you can set the USER VOICES from **1 to 32** (there are just 32 Voices in this tutorial set. This way it will not overwrite the rest of your PLG150-AN custom board Voices (33-128), if you have any.
- Click OK

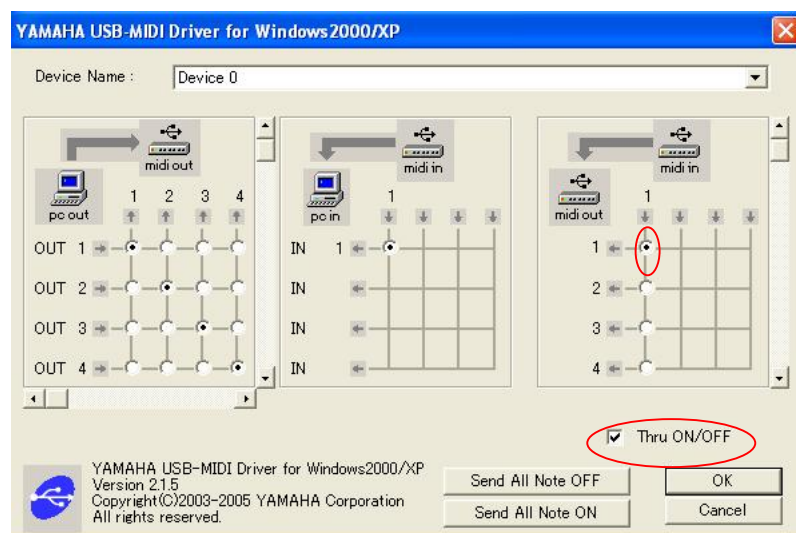


- Click "Open" and open the "Number1.ANS" file
- Click on the "Transmit" icon, or under "Setup" select the "Transmit AN Bulk Data" option or use the quick key (X)

The data is now loaded. Make sure that your Motif ES, S90 ES and/or Motif-Rack ES is set to MIDI SYNC = INTERNAL. This is important for the AN Pattern Generator (step sequencer) to run. It is clocked from the host's clock. Also for those with a Motif ES or S90 ES keyboard make sure that CLOCK OUT = ON



Special Notes for Motif-Rack ES users: If you are using the Motif-Rack ES as your USB-MIDI interface, setup using the following instructions to make sure you can use the Editor **and** play on your controller simultaneously: In the screen shot below a Windows XP computer is using the Motif Rack ES as its USB-MIDI interface.



When running the Studio Manager and Voice Editor as standalone (without a DAW to route signal) the THRU ON/OFF box is checked. This opens the third panel and the connection will allow you to play the Motif-Rack ES from your MIDI keyboard plugged into the MIDI IN jack, while the Motif-Rack ES is set to MIDI IN/OUT = USB.

Special Instructions for those not able to use the AN Expert Editor

You are provided with the Bulk file (Number1.W2B) - which can be loaded to the Motif ES from a Smart Media card or USB drive. If you have an S90 ES you can transfer this file to a USB drive. Load this using the PluginAllBulkX File Type, where 'X' is your slot number.

Phil Clendeninn
Senior Product Specialist
Technology Products
©Yamaha Corporation of America